

FOR LEASE

420 WES GRAHAM WAY | WATERLOO

WHITNEY
Commercial Real Estate Services



CANADA'S FIRST DESIGN CERTIFIED ZERO-CARBON BUILDING



evolv1 evolv1 is a three-storey, 110,000 SF LEED Platinum building within the David Johnston Research + Technology Park. It is currently 95% leased with Ernst & Young and TextNow as anchor Tenants. The building is located immediately adjacent to an ION LRT station and near many amenities.

- Beautifully finished 110,000 SF modern building
- 1,700, 2,500 & 4,000 SF available
- Large atrium with a three-storey Living Green Wall
- Main floor Cora Hub, lounge and event space
- Bike storage, showers, parking, EV charging
- Space for Café on-site and Matter of Taste nearby
- LEED Platinum Certification
- Geo-Exchange/ VRF HVAC system
- Walking trails to Columbia Lake, volleyball nets, Frisbee golf course

\$22-\$25/SF NET | \$14.50/SF ADDITIONAL RENT
Includes utilities & cleaning

www.whitneyre.com



JOIN OTHER TECH COMPANIES IN THE DAVID JOHNSTON R+T PARK



FLOOR PLAN

3rd Level - Office Space

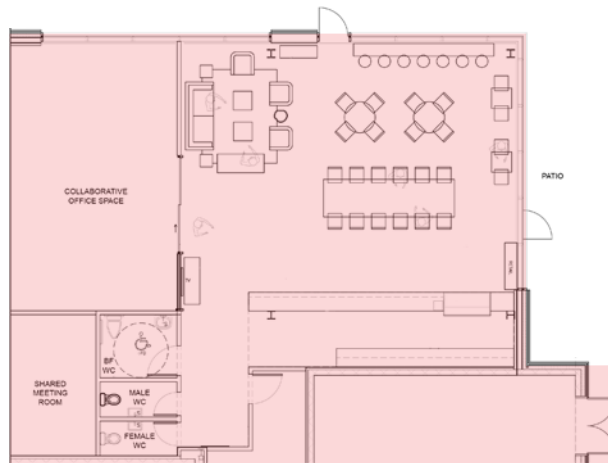
- 2,500 SF Available
- 4,000 SF Available



*Concept Drawing

Main Level - Retail/ Cafe Space

- 1,700 SF Available

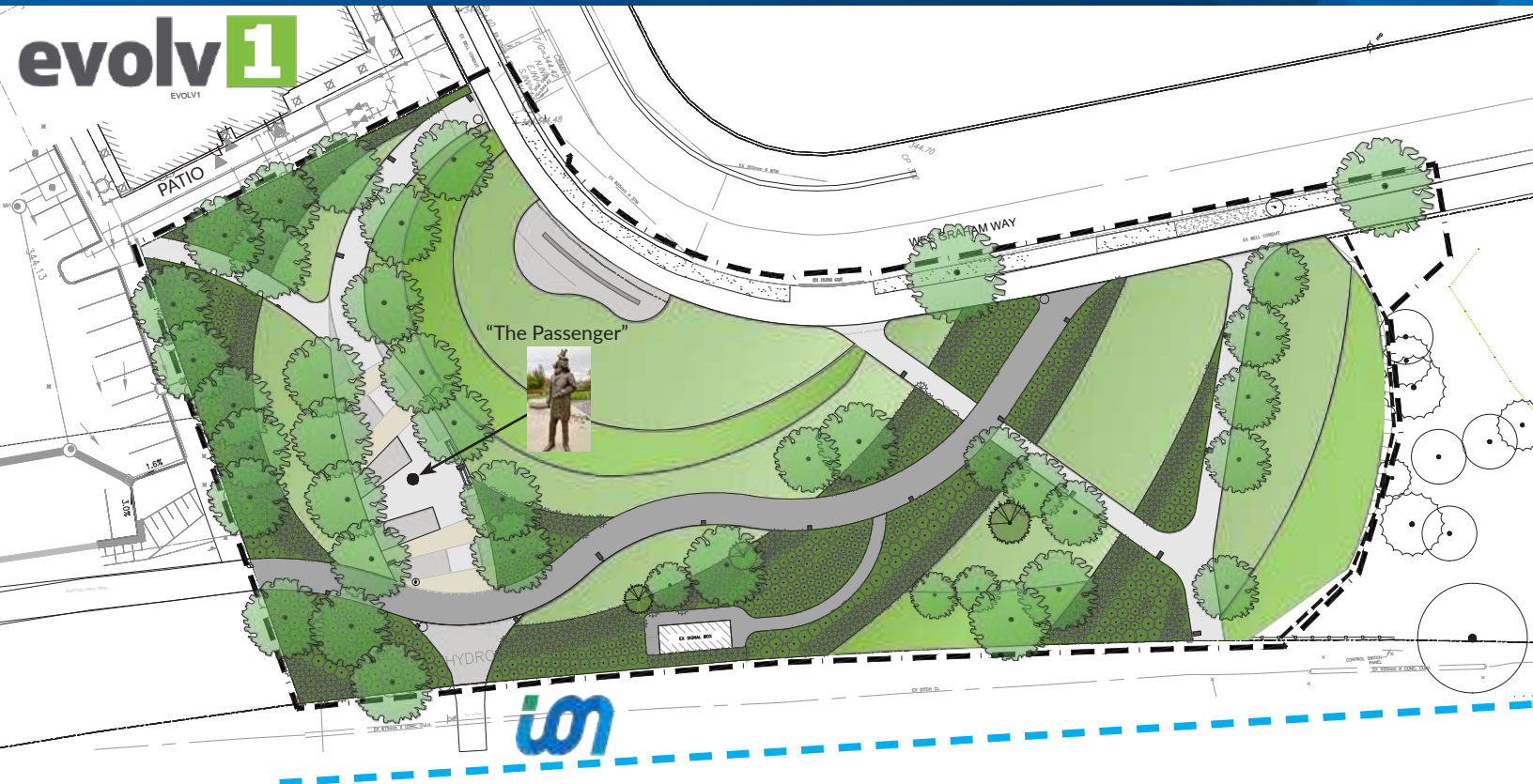


*Concept Drawing

FEATURES

- 110,000 SF LEED Platinum building
- 1,700, 2,500 & 4,000 SF available immediately
- Located in the David Johnston R+T Park
- Across from the University of Waterloo
- Canada's first design certified zero-carbon building
- Home to EY, TextNow, Borealis AI, Accelerator Centre, University of Waterloo
- Beside ION LRT stop
- Three-storey living green wall
- HUB lounge and event space
- Bike storage, showers, parking
- EV charging stations
- Space for Café on-site
- Close to many amenities

EXCLUSIVE GREEN SPACE LOCATED BESIDE THE EVOLV BUILDING



evolv1

THE CORA GROUP
Developers & Managers of Commercial Real Estate

DAVID JOHNSTON
RESEARCH+TECHNOLOGY PARK
UNIVERSITY OF WATERLOO



Ginger Whitney, SIOR, CCIM
Broker, Vice President
519.590.5242
ginger.whitney@whitneyre.com



John Whitney, SIOR
Broker of Record, CEO
519.746.6300
john.whitney@whitneyre.com

WHITNEY
Commercial Real Estate Services

Whitney & Company Realty Ltd. Brokerage | 103 Bauer Place, Suite 2 | Waterloo, Ontario | N2L 6B5

www.whitneyre.com | 519.746.6300

Although the information contained within is from sources believed to be reliable, no warranty or representation is made as to its accuracy being subject to errors, omissions, conditions, or other changes without notice and should not be relied upon without independent verification. These statements are not guarantees of future performance and undue reliance should not be placed on them. Whitney & Company Realty Limited Brokerage © 06/2022